



Density Dynamics Corporation (DDC) is a majority owned subsidiary of SpeedUS Corp. (NASDAQ: SPDE), with a minority interest held by CrossHill Georgetown Capital. The Company was organized in early 2008 to take advantage of the availability of high performance SSD technology.

Density Dynamics has invested in the transformation of the TiGi technology into a line of products, and plans the continued development of the technology platform and the product line. Attached below is a Case Study that demonstrates the superior performance of SSD technologies acquired by DDC. For more information please visit DDC online at <http://www.densitydynamics.com> or call **(888) 293-5658**.

First Year Savings of \$170,000 for Citrix MetaFrame Implementation Healthcare provider cuts costs by 38% through server consolidation

- **Company:** Department of Surgery, Washington University (St. Louis).
- **Challenge:** Deploy Citrix MetaFrame for 320 concurrent users.
- **Applications:** MetaFrame, Microsoft Office suite and clinical software.
- **Environment:** MetaFrame on Windows Server.
- **DDC SRD Effect:** Increased MetaFrame scalability from 30 to 100+ concurrent users.

The Department of Surgery at Washington University is recognized as a world leader and pioneer in the areas of cardiothoracic, urologic and reconstructive surgery. Recently, the department's information technology center decided to implement Citrix MetaFrame XP Presentation server to reach hundreds of affiliated doctors and staff located at hospitals throughout the St. Louis region.

Rick Taylor, Manager for the surgery department's Information Technology Center, was very familiar with Citrix since it was already implemented elsewhere at the university. "MetaFrame is an outstanding product, but it is resource intensive," he said. Other groups at the university, such as Pediatrics and Internal Medicine, were experiencing concurrency ratios of just 15 to 25 concurrent users per MetaFrame server. In addition, their IT administrators have been working to address system latency issues for applications running on MetaFrame.

"Why would I want to purchase and manage fourteen servers, when I can get better results with just three servers using TiGi?"

"I wanted a way to cut costs for our MetaFrame implementation and increase reliability," he said. Taylor turned to Server Centric Consulting, an experienced systems integrator and Gold-level solutions provider for Citrix Systems. Server Centric Consulting introduced Taylor to the DDC SRD, a data-throughput accelerator device that innovatively applies solid state technology to increase performance for servers and storage systems.

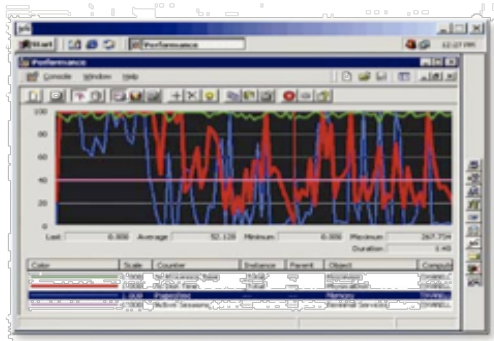
Because of Taylor's previous experience with solid state technology as a technician in the military, he immediately recognized the longevity of the SRD device. "Solid state lasts forever," he said. But what happened next even surprised the IT veteran.



Density Dynamics Corporation (DDC) is a majority owned subsidiary of SpeedUS Corp. (NASDAQ: SPDE), with a minority interest held by CrossHill Georgetown Capital. The Company was organized in early 2008 to take advantage of the availability of high performance SSD technology.

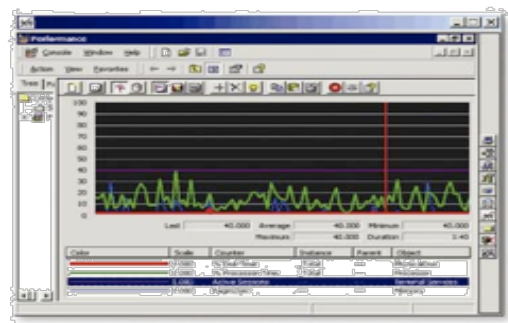
Originally, Taylor estimated that he would require 14 servers running 30 users each. During their first set of tests, Taylor's team achieved 150 concurrent Citrix users on a single Dell 1650 server. Plus applications loaded faster and ran without latency. "The IT people from the Pediatrics and Internal Medicine departments were amazed," said Taylor

MetaFrame without DDC SRD



Comparison shows MetaFrame Presentation Server with 40 concurrent power users.

MetaFrame with DDC SRD



Green = Processor Utilization
Red = Disk Queuing
Blue = Swap File Utilization

Taylor estimates that first year savings alone with the DDC SRD is more than \$170,000 taking into account all of the extra hardware, maintenance and personnel costs that would have been required otherwise. "Why would I want to purchase and manage fourteen servers, when I can get better results with just three servers using DDC?"

"You will save money running a Citrix environment with the SRD," said Taylor. "That's the bottom line."